

# Mustang Track Loader MTL16

## Technical Specifications

### ENGINE SPECS

Make	YANMAR	
Model	4TNV98	
Displacement	202.5 cu. in.	(3.3 L)
Number of Cylinders	4	
Aspiration	Natural	
Rated Power Output	66 hp	(49 kW) @ 2450 rpm
SAE-Rated Torque	181 ft. lbs.	(244 Nm) @ 1600 rpm
Engine Oil	10.8 qts.	(10.2 L)
Engine Coolant	11.6 qts.	(11 L)
Fuel Tank	19.8 gal.	(75 L)

### ELECTRICAL SYSTEM SPECS

Battery Power	12 volt	
Alternator Amps	40 amp	

### HYDRAULIC SYSTEM SPECS

Std. Auxiliary Hydraulics	18 gpm	(68 L/min )
Optional Hi-Flow Auxiliary Hydraulics	N/A	
Working Pressure	2988 psi	(206 bar)
Hydraulic Tank Refill/System Total	10.2/15.8 gal.	(38.6/59.8 L)
Self-Leveling	Standard	

### CAPACITIES / PERFORMANCE SPECS

SAE Breakout Force - Lift	6709 lbs.	(29.8 kN)
SAE Breakout Force - Tilt	6728 lbs.	(29.9 kN)
Rated Operating Load - 50% Tipping Capacity	2315 lbs.	(1050 kg)
Rated Operating Load - 35% Tipping Capacity	1620 lbs.	(735 kg)
SAE Tipping Capacity	4630 lbs.	(2100 kg)
Travel Speed - Low	0 - 4.5 mph	(0 - 7.2 km/h)
Travel Speed - High	0 - 6.3 mph	(0 - 10.1 km/h)
Lift Arm Raise Cycle Time - Full Load	4.2 sec.	
Lift Arm Lower Cycle Time - No Load	2.7 sec.	
Bucket Dump Cycle Time - Full Load	2.7 sec.	
Bucket Rollback Cycle Time - No Load	2.1 sec.	

### UNDERCARRIAGE SPECS

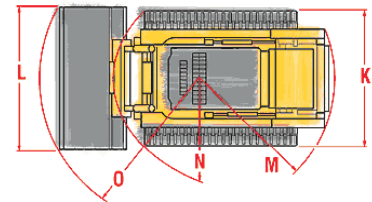
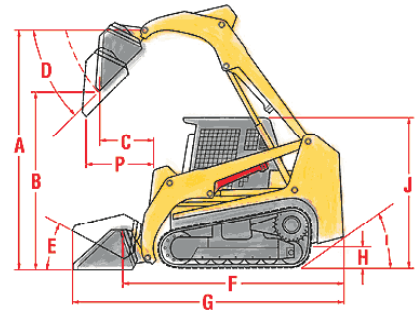
Traction Pump/Tractive Drive	Piston / Planetary	
Traction Braking	Hydraulic	
Drawbar Pull	8812 lbs.	(39.2 kN)
Track Type/Track Rollers Each Side	Rubber / 4	
Track Width	12.6"	(320 mm)
Track Contact Length	54.7"	(1389 mm)
Track Contact Area	689.2 sq. in.	(4446 cm <sup>2</sup> )
Ground Pressure	4.86 psi	(0.34 kg/cm <sup>2</sup> )

### DIMENSIONS / WEIGHT SPECS

Operating Weight		7497 lbs.	(3401 kg)
Max. Lift Height to Bucket Pin	(A)	119.5"	(3035 mm)
Dump Height	(B)	93.3"	(2370 mm)
Reach at Maximum Lift	(C)	33.5"	(851 mm)
Dump Angle	(D)	37°	
Bucket Rollback at Ground Level	(E)	35°	
Length w/o Bucket	(F)	108.5"	(2756 mm)
Length with Bucket	(G)	139.5"	(3543 mm)
Ground Clearance	(H)	12.2"	(310 mm)
Angle of Departure	(I)	26°	
Height to Top of ROPS	(J)	83.6"	(2123 mm)
Width w/o Bucket	(K)	62.2"	(1580 mm)
Rear Clearance Radius	(M)	61"	(1549 mm)
Front Clearance Radius with Bucket	(N)	93"	(2362 mm)

### BUCKET SPECS

Width	(L)	70"	(1778 mm)
Reference Bucket Capacity		15.3 cu. ft.	(433 L)
Mounting Attachment System		Multi-Tach™	



1880 Austin Road  
 Owatonna, MN 55060-0547  
 Phone: 507-451-7112  
 Fax: 507-451-8209  
[www.mustangmfg.com](http://www.mustangmfg.com)

© 2005 Mustang Manufacturing Company, Inc.  
 All Rights Reserved.